

Swinnerton Family History

The Journal of the Swinnerton Society



ISSN 0508 6755

VOLUME SEVEN

10
NUMBER NINE

DECEMBER 1989

The Swinnerton Society

A non-profit making organisation devoted to the research and publication of Swinnerton Family Records and the welfare of St.Mary's Church, Swynnerton.

Registered as a Charity No.518184

PRESIDENT

Sir Roger Swynnerton CMG.OBE.MC.

VICE-PRESIDENTS

H.Norman Swinnerton A.Sc. (USA)

Lord Thomas of Swynnerton

CHAPLAIN

The Reverend Edward Swinnerton

ARCHIVIST & GENEALOGIST

Col.I.S.Swinnerton TD.DL.JP.FSG.

Yew Tree Cottage

Blackford

Stoke St.Milborough

Nr.Ludlow

Shropshire SY8 2ET

COUNCIL

Col.J.C.A.Swinnerton OBE. (Chairman)

L.W.Swinnerton Esq.

J.E.Swinnerton Esq. (PRO)

Mrs Vicky Leighton

P.R.Swinnerton FCA. ATH (Treasurer)

T.F.Swinnerton Esq.

N.W.R.Watts Esq.

Mrs C.F.M.Swinnerton

(Membership Secretary & Journal Distribution)

SECRETARY

D.G.Brock

15 Upper Park

Willenhall Wood

COVENTRY

West Midlands CV3 3GH

FROM THE EDITOR

My being relieved from the secretarial duties is already having a beneficial effect in that I have had some time to go through the mass of documents and bits of paper which have accumulated over the last 2 to 3 years. One has given the answer to a problem which has puzzled me for a very long time, another looks as if it might give a lead to a solution of a missing link. More of these anon but I am, at last, getting down to some family history again.

I have also been able to check the Swinnerton list in the 1988 International Genealogical Index which I have had for over a year and I find it has a lot of extra entries to the 1984 edition.

My next task is to update the Trees with these new facts and make sure that all the information that is in my files has been transferred to them. This is a massive job and will take a long time but we are making some progress at last. I intend to publish these as I do them in the centre page of the Journal and they will eventually join up so that you all can have copies of the big tree we display at Gatherings or at least of your own branch. If you do not want to break up your Journal you can pop in to your Post Office, Library or copyshop and take a copy.

These new Trees will start in the March 1990 Journal

In 1981 and 1982 I published a fairly comprehensive history in the pages of this Journal of the pottery firm of Swinnertons of Hanley Ltd. Now, through the hard work of our member Douglas Hawley (himself a descendant of Bertram Swinnerton, the founder of the firm), much more information has come to light and in particular about the various patterns they produced and as I know that quite a few members are making collections of Swinnerton pottery, I have devoted quite a large part of this issue to it.

Swinbertons, Vulcan Works, Hanley, have appointed Mr. H. Field their London agent, and are now showing their samples at his rooms, 106, Hatton-garden, E.C. They have the exclusive distributing agency for the United Kingdom of the productions of J. & G. Meakin, Ltd., Hanley, and amongst the samples of that firm's goods Swinberton's have a large number of novelties in toilet services. One of the newest is the "Cairo" shape, a very attractive embossed design. It is shown in a number of shaded decorations of an up-to-date character. Mr. Field, their London representative, for many years represented Blizard & Isaacs, who have retired from business. Many of the shapes and patterns used by Blizard & Isaacs are now supplied by Swinberton's, and samples of them are still on show at Mr. Field's rooms.



November 2, 1908.

Swinbertons, Vulcan Works, Hanley, have their London rooms at 106, Hatton-garden, and are represented by Mr. H. Field. They have a large assortment of samples, toilet ware being their strongest line. They have shapes and decorations to suit all tastes in good medium class sets. The new shapes and decorations are full of variety,



MESSRS. SWINNERTONS: "THE GEM."

and are in accordance with modern taste. The "Assella" shape has a useful and graceful ewer and an oval basin with end tips as handles. The "Gem" shape is in one of the most popular styles; a well-modelled, graceful jug and deep round basin, without embossments. The

plain surface invites a large variety of printed patterns. There are many pretty printed floral designs on this "Gem" shape, one of which is shown in our illustration. The "Radio" toilet shape is a new and pleasing production, both as to shape and decoration. The company show some pretty lines in dinner ware, of which the "Pembroke" is one of the best. The vegetable dishes are oval in shape, and have many neat printed decorations in flown blue and canton. The "Empire" dinner ware is shown in various patterns printed and enamelled. The selection of tea ware is a good one in which there are many pleasing shapes in inexpensive printed decorations and gilt. The tea ware is very light, and is nicely modelled. The company have export goods suitable for all markets, and have many special shapes and decorations for the export trade. They keep very heavy stocks and are prepared to give smart delivery. They supply mixed crates, containing toilet ware and dinner ware, tea ware, and jugs assorted to suit customers.

THE POTTERY GAZETTE AND GLASS TRADE REVIEW.

7 1, 1919.

Swinbertons, Ltd., Hanley, have made quite remarkable strides in a forward direction since it was my pleasure to last wait upon them some two or three years ago, and this in spite of the fact that "there has been a war on." Whereas, at that time, they had only one factory—the "Vulcan" Works—now they are operating no less than three. This enables them to concentrate at the different factories on special lines, and so avoid many of the troubles that are inseparable from multiplicity and diversity of one's productions. At the Vulcan Works they are now able to specialise on toilet ware, trinket ware, dinner ware, and suite ware; at their "Washington" Works they are laying themselves out on the Continental plan of specialisation for the efficient and economical production of teas and saucers and plates merely, which the market is demanding in heavy quantities; and their latest acquisition is in the shape of a teapot factory, at which in future they will make their own Samian Jet, Rockingham and other teapots. As showing the enterprise of the firm, they have also secured land adjoining for further developments in the near future. The three factories are all moderately adjacent, having, so to speak, "Victoria Place" Shelton, as their hub. But apart from these developments, which in themselves interested me greatly, I was pleased to notice the advance which has been made during a state of war in the company's designs. They have a most entertaining selection of goods for the ordinary practical dealer in utilitarian and ornamental wares, and they are showing

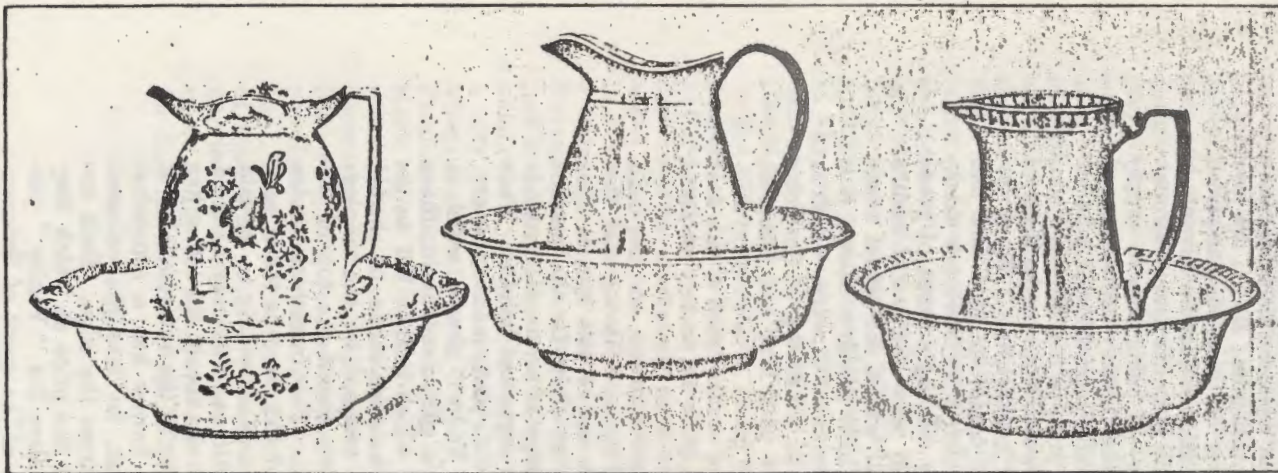


c. 1917-30

June 1, 1921.

many really good effects at extremely moderate prices. To mention just a few of their leading lines in toilet ware, they have a new squat-shape ewer, which in pattern 713 takes a pink ground, with a neat enamelled pattern at the top of the ewer, completed by a black border. This pattern is also supplied *en suite*, flower pots and vases being prominently shown. The same design can also be had in pretty shades of mauve, grey and yellow. Their 746 pattern, also supplied *en suite*—as indeed are most of the decorations—consists of a violet and snowball treatment, delicately shaded in pink. 739 pattern has a black and white chequer border, with the violet and snowball pattern carefully shaded up in grey and just a delicate touch of pink to throw the violets in relief. 737 pattern is a representation of Kensington sprays of roses, in which the true old-fashioned hand-painting has been as closely approximated by mechanical means as could be hoped for in wares at such a popular price. It is finished off with black and white diamond borders, and can be had in any predominant shade of colouring that may be desired to fit in with a particular scheme of furnishing. One of the best of the present decorations of this house, in the writer's opinion, is their 705 pattern, a fine reproduction by lithography of an old "Davenport" pattern, consisting of coloured birds and old-fashioned flowers confined in a black and yellow diamond border about 1½ in. deep. Black vertical stripes connect this to a lower border of similar spirit. This is certainly a very smart new decoration at an interesting price. Swinnertons, Ltd., are experiencing a very big demand just now for vases and plant pots, which they offer in numerous styles of shapes and decorations. They have a very interesting triangular vase, made in three sizes, which looks extremely well in pattern 713. A capital Persian effect is seen in No. 748, finished off with a black edge. The "Gem" flowerpot, an ordinary round plant pot on three feet, looks particularly well in decoration 648, a pink ground with a black chequer border. Grey, mauve and green are also amongst the popular colours inquired for. Finally, Swinnertons, Ltd., have a popular range of that now everyday style of ware with an ivory-shaded ground, over which is applied numerous treatments, all more or less subservient to the always imperative "Worcester" shading. In this connection their 623 pattern is a ready seller.

Swinnertons, Ltd., Vulcan Pottery, Slippery-la., Hanley, whose London representation has been held for many years by Mr. H. Field, at 16 Hatton-gdn., E.C.1, are now showing a better range than ever of their popular-priced toilet services. The firm in question holds the advantage—and it is an advantage in the peculiar times through which we are at present passing—of being able to supply something to suit the purse of the humbly-circumstanced dealer, as well as being able to offer something of a better type to those dealers to whom price is not the only consideration. At every point, however, the productions of Swinnertons, Ltd., are strictly competitive. What the firm aims at is a steady, solid trade, in good and bad times alike, and the way in which they have set themselves to attain this object is by offering a range of goods that are never out of the way in price and are of such a type that they are bound to fall within the actual needs of the average housekeeper. Whilst the firm caters, it is true, for a certain amount of ornamental ware, which is felt to be necessary to economy in the matter of the firing of the ovens, they have always paid first and foremost attention to the manufacture of goods of a strictly utilitarian order, and it is no doubt in consequence of this fact that they have not experienced quite so acutely as some other firms are reported to have done the effects of the trade depression which set in some time ago, and has been sharply accentuated by the coal strike. Having said this much, we would like to refer to one or two special lines which Swinnertons, Ltd., have on show for the present season. First of all comes a range of semi-solid grounds in toilets, finished off with black edges and handles. Four principal shades are noticeable, viz., pink, mauve, canary, and green. Supplied on the "Tudor" shape, which is a pleasing modern form having a good-sized basin, these sets create an effect at a price which cannot fail to interest the average dealer. In another range of shaded ground sets additional effect is attained by the employment of a narrow lithograph strip round the top of the ewer and the edge of the basin. The furnishing trades seem to prefer this addition, and this may be taken as a pretty clear indication that there is something to be said for the idea. Decorations Nos. 816 and 826 may be cited as illustrating the styles of which we speak: the latter has an inch-wide litho-coloured border at the extreme edge of the shaded ground, whilst the former has a somewhat narrower treatment, so to speak, let into the coloured ground at some slight distance from the edge. Both are quite good in their way, and at the price at which they are offered. In higher-priced toilets the "Vanity" pattern may be cited as indicative of the spirit of Swinner-

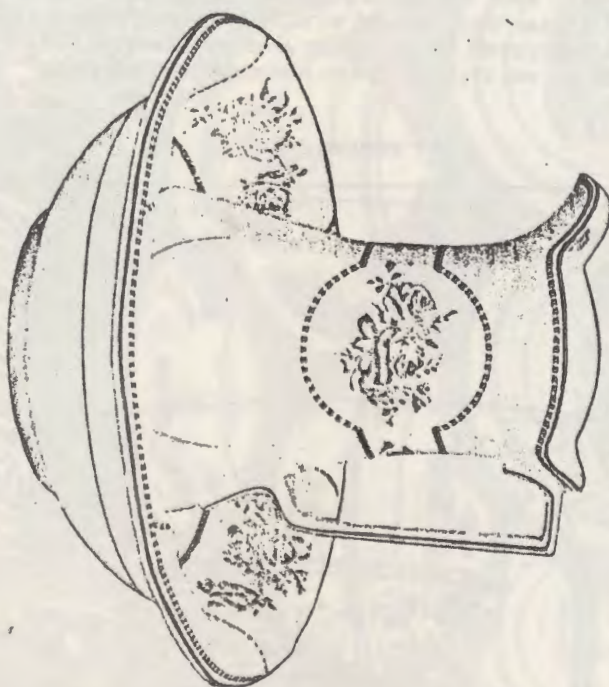


(Photo. by "The Pottery Gazette.")

SWINNERTONS, LTD.

tons, Ltd., to produce something progressive in the matter of style and technique. This pattern, which is an enamelled one—in other words printed from a copper-plate outline, and filled in with extra colours by hand—is suggestive of an old Rouen style of treatment. It can be supplied in a variety of finishes, and even as a plain printed pattern, in which latter case it is dealt with in a light Chinese blue, which is quite distinctive, being somewhat removed from either the ordinary cobalts or the Cantons. In black grounded wares the firm has also some smart colourings, and in really cheap shaded and litho sets there are one or two stock lines which are sure to command the dealer's favourable notice. Before concluding, we must not forget to mention several smart suites of tableware fancies. One of these, known as the "Devonport," supplied with or without a ground of either rose or canary, and having a lithograph border in a bird design,

aims at creating quite a measure of effect without incurring much expense. In another pattern—the No. 814A—one catches a glimpse of the way in which Swinnerton's, Ltd., have endeavoured to meet the competition of the Central European nations in regard to everyday tablewares, such as sets of jugs, cheeses, toast-racks, and cruets. The range of articles offered seems illimitable. At the firm's Washington works mass production is still going on in regard to teaware, which begins with the most modest of all stock lines, such as plain white or edge line and sprig, and extends upwards through plain prints such as "Willow," to a series of smart border-lithographed designs. That Swinnertons, Ltd., are out to retain their full measure of the trade that is available seems to be quite clear from a visit to their showrooms.



SWINNERTONS, LTD.

finished off by a plain black handle. In the production of this class of goods the firm appears to be particularly at home, and well in the running for trade at competitive prices. The old, and always much-favoured, blue "Willow" pattern is obviously an important factor in the trade of this house—and not merely an addendum to it—

Swinnertons, Ltd., Vulcan & Washington Poteries. Hanley, are a firm whose main policy for many years has been to provide domestic pottery, in certain specialised branches, suitable for the requirements of the middle classes, and, judging from the display in their London showrooms, at 16, Hatton-garden, E.C. (in charge of Mr. H. Field), as also from what we have seen on many occasions when visiting the firm's respective potteries, they succeed in carrying out their intentions very well. In popular-priced dinner and tea ware they are showing at the present time several very smart lithograph patterns with yellow and black finish, whilst in tea ware, specially, they have a whole range of solid-ground colours,



SWINNERTONS, LTD.

[Photo. by "The Pottery Gazette."]

mention in conclusion one particular tea set which they are making just now in very large quantities, viz., their "Stratford" pattern in powder blue, with a gold edge, the demand for which has really been quite phenomenal. Mr. H. Field, 16, Hatton-garden, E.C., is the firm's London agent, and a full range of their productions can be seen there at any time.

by Swinnertons
HANLEY STAFFORDSHIRE
Manufacturers of Earthenware, Delftware & Fine Arts Etc.

Old English Pottery

STAFFORDSHIRE POTTERY

Alfred House: ALCOCK, LINDLEY & BLOOME LTD., Manufacturers of SAMIAN & ROCKINGHAM TEAPOTS and the famous NON-D RIP & LOCK-LID TEAPOTS

185

POTTERY AND GLASS July 1953

I must apologise for the quality of some of the illustrations accompanying the extracts from the Pottery Gazette but they are taken from photocopies of the original journal and some of these were very faint. I hope that one day I may be able to get hold of original copies or have them photographed.



A PROBLEM SOLVED

For many years I have had records of a **WILLIAM SWINNERTON** who married Mellone Rowley at Quatford, near Bridgnorth and had a family there but I have never been able to fit him in to any branch of the family.

When we were doing our research project into the origins of Sir John Swynnerton, Lord Mayor of London Mrs Pauline Litton obtained copies of 3 Oswestry wills and an Administration. The latter, on examination the other day, proved to be of **MARGARET SWINNERTON** and, as you can see, mentions William as her next of kin which allows me at last to place him on a tree.

Overleaf is a full tree of the Oswestry branch and I believe that some, at least, of the large clan of Swinnertons who lived in the Wrexham area are probably descended from this family.

Know all Men by these Presents, That We William Swinnerton of the Parish of Quatford in the County of Salop Labourer. William Jones of the town of Oswestry in the said County of Salop Mercer and George Wynne of Saint Asaph in the County of Flint Innkeeper are holden and firmly bound unto the Right Reverend Father in God John by Divine Permission Lord Bishop of Saint Asaph in the Sum of Two Hundred Pounds of good and lawful Money of Great Britain ... (standard format)

... dated the eighth Day of August in the fifty seventh Year of the Reign of our Sovereign Lord George the third by the Grace of God of the United Kingdom of Great Britain, and Ireland King, Defender of the Faith, and so forth, and in the Year of our Lord One Thousand Eight Hundred and Seventeen.

The Condition of this Obligation is such, that if the above bounden William Swinnerton Lawful Brother next of Kin and legal Administrator of all and singular the Goods, Chattels, and Credits of **MARGARET SWINNERTON** late of Oswestry in the County of Salop and Diocese of Saint Asaph spinster deceased do or make or cause to be made a true and perfect Inventory of all and singular the Goods, Chattels, and Credits of the Deceased, which have or shall come to the Hands, Possession, or Knowledge of him the said William Swinnerton or into the Hands and Possession of any other Person or Persons for him and the same so made do exhibit or cause to be exhibited in the Registry of the Consistory Court of Saint Asaph at or before the last Day of September next ensuing ... (standard format) ... and further do make or cause to be made a true and just Account of his said Administration at or before the last Day of August which shall be in the Year of our Lord One Thousand eight Hundred and eighteen ... (standard format).

Sealed and delivered in the presence of
Edw. Roberts Clerk to M Wyatt Mount
Saint Asaph

The mark of X
William Swinnerton

William Jones
George Wynn

8th August 1817

The within Named William Swinnerton then appeared and took the usual oath of an Administrator and that the Personal Estate and Effects of the Intestate Margaret Swinnerton did not at the time of her death amount in value to the sum of One Hundred Pounds.

before me ?N1? Shipley C

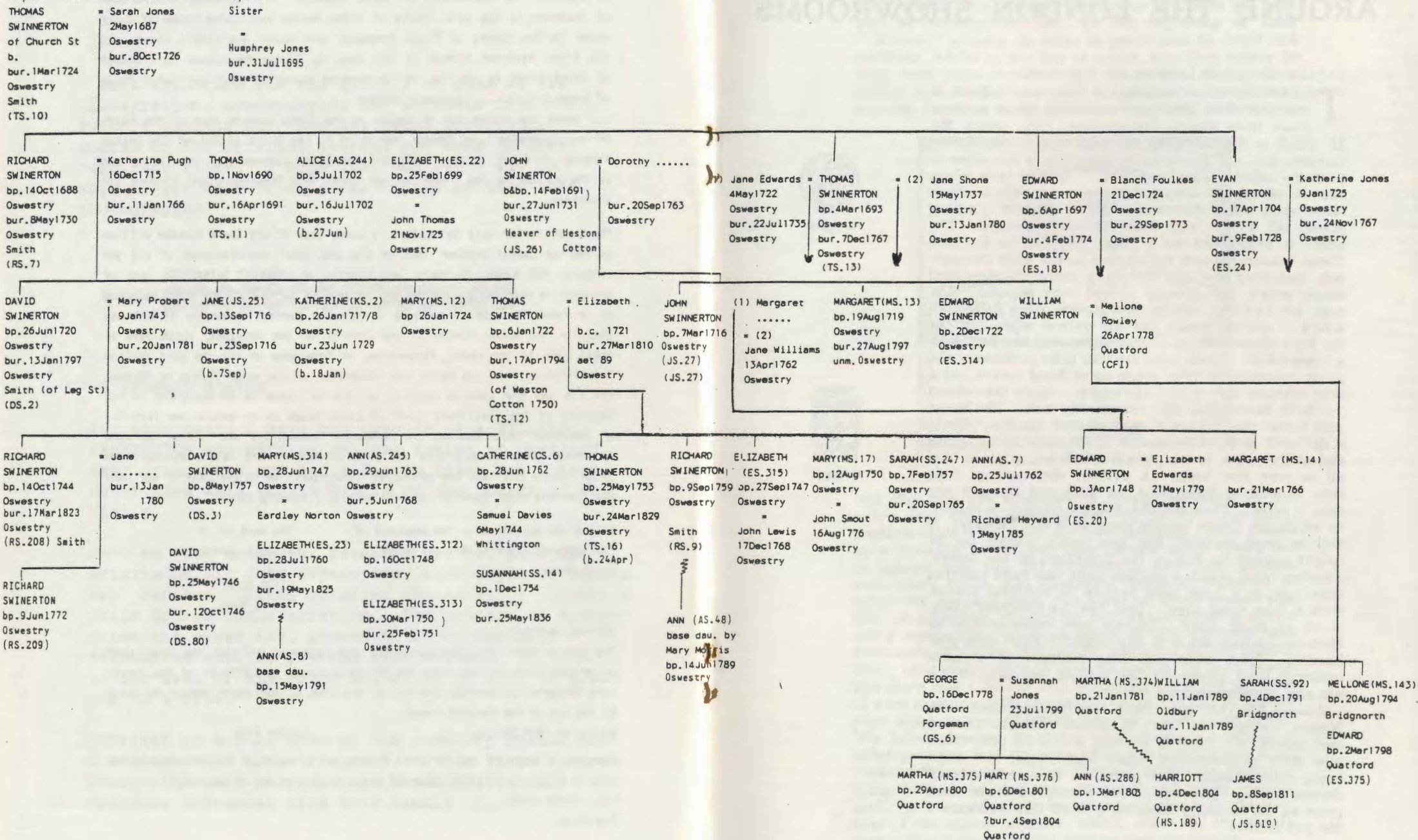
under £100

Oswestry : Admon to the Personal Estate and Effects of Margaret Swinnerton late of Oswestry Spinster deceased Granted the 8th day of Augt. 1817

D.D. Under £100.

Registrar.

SWINNERTON OF OSWESTRY



AROUND THE LONDON SHOWROOMS

FINELY COLOURED LITHOGRAPH PATTERNS.

THERE are some remarkably fine colour effects in the controlled litho patterns on the latest earthenware from Messrs. Swinnertons, Ltd., which Mr. H. Field is displaying at his showrooms, 16, Hatton Garden, E.C. 1. Particularly attractive is the series of patterns called "Coaching Days." On the table where this is effectively arranged there are plates of three sizes, each being decorated with a different coaching scene, all richly and harmoniously coloured. The effect is heightened by a pink wash on the handles. These coaching scenes are applied to the ware throughout, including the egg sets in a recently introduced shape which has already proved very popular. The cups are footless, and fit into grooves on a little tray which is almost square but has curved sides. In the tea ware there are cups of two styles, tall and low, with a turned foot. Then there are four litho patterns of the more conventional type, made up of floral sprays and a thin coloured line around the edges. Again the colours are both harmonious and remarkably rich. The bread and butter plates have elegant pierced handles. Quite a different style of decoration is on show at the other end of the room, just a plain band of red, green or blue all in very fine tones. A pattern displayed on fruit sets, as well as dinner and tea ware and the new egg sets, is 1665. Then the Old English Garden, a pattern in which the Queen bought some ware last February, is still in good demand, this also being notable for its bright colours as well as the prettiness of the design. Another litho, which is perhaps more like hand painting than any, is a large tulip pattern in beautiful shades, with a blue wash edge. This, like the Coaching Days, is on an ivory body. Another new series is that of Historic Castles, lithos in rich bright colours with gold handles. Then there are litho patterns of a more ordinary kind shown on the popular egg sets, which are also supplied in solid colours.

Among the tea pots from the factory allied with Messrs. Swinnertons, that of Messrs. Alcock, Lindley and Bloore, Mr. Field is showing a lock-lid pot with a new style of decoration called Rembrandt, the shape being called Linda. Tea pots with this pretty stencil decoration in a yellowish shade are supplied at the same price as the ordinary branded pots of this well-known tea pot factory.

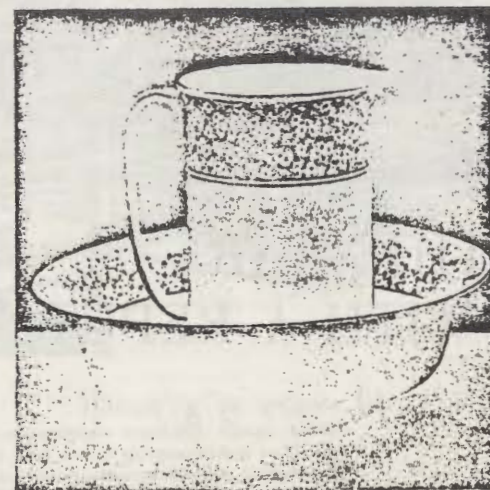


c. 1930+



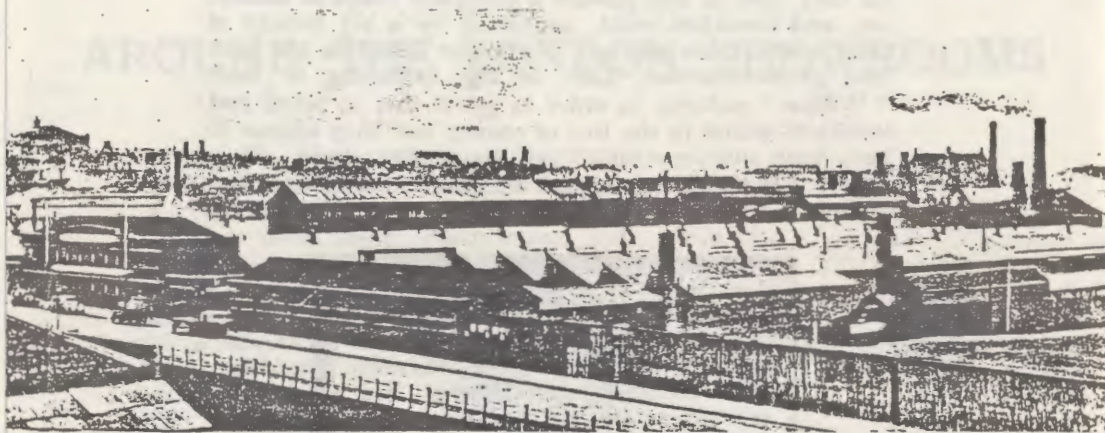
c. 1930+

for they offer in this pattern a complete range of dinner, tea, and breakfast ware, supported by a big variety of other useful table articles. Particular attention has been paid by Swinnertons, Ltd., to the engraving of their "Willow" pattern, in order to get it true to detail and tradition, whilst in the tint of colour, too, they appear to have been ultra-careful to get the perfect shade. It is patent that the firm has gone to considerable trouble and expense to make their "Willow" pattern JUST RIGHT,



SWINNERTONS, LTD.

and this care and attention is being rewarded in the orders that are daily being received for it. For good, medium-class toilet ware, Swinnertons, Ltd., have always been specially noted, and their sample range shines out in lithographed and gilt treatments, semi-solid grounds with black finish, and numerous patterns designed to catch the eye and meet the purse of those people who like an attractive production but whose purse is necessarily restricted. It is in goods of this category that thousands of dealers are chiefly operating at the present time, and, whilst there is now no scarcity of such goods, like there was a year or two ago, there are many qualities of ware available, and the dealer has to find out by experience which sources of supply are best suited to his needs. We have pleasure in giving illustrations of a couple of toilet patterns that are now figuring largely in the order books of Swinnertons, Ltd. These illustrations, however, being limited, as they are, to black and white, cannot really give an adequate impression of the full effectiveness of the colour schemes, which, after all, are mainly responsible for making the designs real good value.



EARTHENWARE WITH A REPUTATION

40 years of growth

TABLEWARE of moderate price with pleasing patterns and a sound body has always been the aim of Swinnerton's of Hanley. Their earthenware is thin, light and fine, and has typically a dark or light ivory body. To achieve this, the ingredients have to be well balanced and every process completely controlled. The potter's mill that had been used by the firm for some time was recently considered out of date economically, and not up to producing the quality required, so they purchased a 40-acre site outside Hanley on which a new mill has been built, the rest of the ground being earmarked for new developments later on.

If you can't buy it, make it

The company now controls a group of factories but its beginnings were in a factoring business started by the late Mr. B. J. Swinnerton at Burton Place, Hanley, and its progress has been typical of the cohesion in business affairs which is the strength of the potteries. Finding he could not be sure of a continuous supply, he decided to buy a manufacturing plant and in 1911 he joined with the late Mr. W. Lindley, a practical potter of wide experience, in taking over a business at the Old Chelsea Works.

As this factory could only produce hollow-ware, the first extension, the forerunner of many others,

was a biscuit intermittent oven, a range of potters' shops capable of producing a full line of dinner and tea ware, and a block of warehouses. On the death of Mr. Swinnerton, Mr. V. G. H. Alcock joined the firm, becoming its chairman.

Money in teapots - but no lead

During the first world war, the late Mr. W. Bloore joined the firm and another factory, the Washington Pottery, since sold, was acquired. When a teapot manufacturing business came on the market, the three partners, Messrs. Alcock, Lindley and Bloore, decided to buy it, and so a new company was born. At this factory Rockingham glaze, which passed the low solubility test, was first introduced and is now used throughout the trade with a consequent elimination of lead poisoning, which up to that time had been very prevalent.

In 1925, as business was growing, the Victoria Pottery was purchased, followed soon after by the purchase of the Scotia Pottery at Burslem. In the meantime, the teapot business had developed and a further teapot factory was added to the group.

Realizing the trend of events, the directors, now joined by Mr. R. B. Bloore and Mr. W. S. Lindley, decided to build a new factory for the exclusive manufacture of Samian and Rockingham teapots. This single-storey factory embodied tunnel oven



Above: The semi-automatic making shop, where flat ware is shaped and dried preparatory to firing. Right: A bay of the biscuit warehouse where the ware is stacked prior to the decorating processes. Behind the piles of plates is the wall of a steel-encased tunnel oven

SWINNERTON'S
STAFFORDSHIRE
ENGLAND

c. 1946+

VICTORION
SWINNERTON'S
STAFFORDSHIRE
ENGLAND

c. 1946+





In the on-glaze decorating shop, girls paint the colours on the fired patterns. Right: The cup-making department is situated conveniently on the site of two intermittent ovens. The cups are taken from the shaping machines and piled on the trolleys for the biscuit firing



c. 1946 +



c. 1962 +



'Autumn Spray' is an on-glass lithographed design on borders and outside of cups on the Harvest dark ivory body. Edges are finished with a gold line



In the Luxor shape, the rim and lower part of the cup are slightly panelled and fluted. The ever-popular English rose makes a traditional pink and dark green border, lithographed under the glass. The body is light ivory

firing, mangle type driers heated by waste hot air and with a labour-saving layout, with the emphasis on flow production.

In 1938 a start was made to rebuild the Vulcan Pottery, but it was interrupted by the second world war, and the scheme was finally completed last August, when the latest type of steam raising plant was installed. The boiler is of the economical, fully-automatic type. Emphasis was again laid on flow production in designing this factory and of course, all the latest types of labour-saving machinery, some of which are the patents of Swinnertons', were installed. Tunnel ovens were included and open firing with a naked flame of city gas for both biscuit and glaze was introduced to the trade of this country. During the whole of this rebuilding, not a single hour's work was lost by any operative.

In 1952 the latest acquisition of the group, the old-established business of Davison & Son Ltd., was purchased. This factory has been completely brought up to date and has been given tunnel oven firing.

Pattern for Success

The control of these many factories is in the hands of the directors and of the works directors, Mr. A. J. Lewis and Mr. H. C. Rogers, while the large sales organisation has been taken over by Mr. R. D. Bloore, from Mr. C. T. Parkes, whom illness

has caused to retire to a consultative capacity. Mr. Bloore is proud to tell visitors that the company's most successful pattern 'England Gardens' was bought both by the late Queen Mary and by the Princess Royal. This pattern is again to appear on the market, though new designs are constantly being produced. Some of them are illustrated and the modern green and white pattern is evidence that Swinnertons are not content merely to follow tradition in their designs any more than in their methods of production.

Rimmed and Rimless

In this tea-set, shown on the opposite page, the absence of the rim has set free the pattern from the limitations of the border, and a freehand design is used to cover the whole surface of the plates. In the more traditional style is the pleasingly restrained and formalized border which, in various colours, has been in production for some time.

Swinertons' earthenware has always covered the middle price ranges and their patterns follow the 'middle way' of taste; extremes are not to be found among them, but there is considerable variety within their chosen limits. The 'June Rose' pattern is an example of naturalistic treatment, but confined to the conventional border, while the spray design spills over into the centre of the plate, and heralds the all-over treatment of the coupe shape.

A plainer shape, called Imperial is shown in the top picture, decorated with a band of formalised flowers in gold and litho stamp. Gold is again used for finishing. The teaware shown below is in a modern rimless style in ivory with a grass green freehand pattern painted under the glaze. The simple curves of jug, cup and sugar basin are typical of contemporary designs



THE "Real Old Willow" STORY

An account of the enchanting love story illustrated by this famous English tableware pattern



This fascinating Eastern legend of star-crossed lovers takes its name from the willow tree, (shown in the centre of the plate) which 'in Spring unfolds its blossom before the leaves appear'.

The mysterious figures on the pattern have continually aroused curiosity. Who are those three strange figures in dim blue outline on the bridge? Why do those doves - disproportionately drawn - flutter about and forever kiss as if intensely joyful? On the right is a Chinese house of unusual extent and magnificence set in a garden lavishly planted with large and rare trees.

The house belonged to a rich Chinese Mandarin who had amassed a fortune by levying customs dues for the Emperor. Following the sudden death of his wife, the Mandarin retired to the house, taking with him his only daughter KOONGSHE, and his secretary CHANG, whose services he had retained for a few months so that his affairs could be put in order. On completion of this task the faithful CHANG was discharged, but meanwhile he had fallen in love with beautiful KOONGSHE. Before parting they vowed to love each other for all time, and for many evenings afterwards they met secretly in the garden, unknown to the old Mandarin. Because of their different social positions, the young lovers knew that the Mandarin would never consent to their marriage; but their love remained strong and true, and they continued to meet in secret. Eventually, the angry Mandarin discovered that his daughter had been meeting CHANG and he imprisoned KOONGSHE in the house, building a high wall of wood across the pathway to prevent entry.



Mandarin suddenly glimpsed them and gave chase. Thus, on the bridge are first, KOONGSHE carrying a distaff, the emblem of purity; second, CHANG the lover, bearing off the box of jewels given by the old Duke; and third, the old Mandarin whose paternal authority and rage are indicated by the whip in his hand. The lovers evaded their pursuers and were sheltered secretly by KOONGSHE'S former maid who, with her husband, the gardener, witnessed the fugitives' secret marriage. At last, the Mandarin issued a proclamation that if his daughter would forsake CHANG, he would forgive her. He now knew that they were living with the gardener and his wife in their humble dwelling (shown on the left side of the bridge), and he sent his soldiers to demand surrender. Escape was impossible; in desperation, CHANG decided to swim across the river and so evade capture. To KOONGSHE'S dismay, he jumped into the rapid torrent and was soon borne swiftly from her sight. KOONGSHE meanwhile had fainted and the maid had carried her to her room. Bravely, the gardener's wife refused to tell the soldiers of CHANG'S whereabouts, and cunningly delayed them by innocent questioning. Later she went to see how KOONGSHE was and to her amazement the room was empty. She rushed to the window and was just in time to see a boat, with the lovers in it, leaving the shore. Quickly the loyal servant removed all traces of the hurried exit, and returned to the waiting soldiers who searched her house but found no trace of the fugitives, nor was there anything worth stealing in the humble little home. With CHANG at the prow, the boat floated down stream all night. Soon after daylight they entered the main river and were lost in the busy throng of the waterway. After several days they moored beside an island in the broad river and here they resolved to settle and live in peace. They both worked hard, built a house, and tilled the land. The Duke's jewels enabled them to buy the little island and to obtain the necessities of life.

CHANG became a competent farmer, returned to literary pursuits, and wrote a book on agriculture which won him great fame in his province. But publication had revealed his whereabouts to his great enemy, the Duke. The malicious nobleman ordered a secret attack on the island and instructed his soldiers to seize KOONGSHE and kill CHANG without mercy. The peaceful inhabitants of the island were quite unprepared and CHANG was mortally wounded. Poor KOONGSHE, distraught, rushed to her apartments which she set on fire and perished in the flames.

KOONGSHE and her loving husband were transformed into two immortal doves, emblems of the constancy which had made them beautiful in life and in death undivided.



Those who depend on the merits of their ancestors may be said to search in the roots of the tree for those fruits which the branches ought to produce.

Barrow

* * *

Some decent regulated pre-eminence, some preference (not exclusive appropriation) given to birth, is neither un-natural, nor unjust, nor impolitic.

Burke - Reflections on the revolution in France.

East African John Swynnerton Appointed Controller/Director, U.E. Steels Ltd.



East African born John R. Swynnerton has been appointed Controller/Director, Associated Companies of United Engineering Steels Limited with effect from the 6th March.

Aged 44, he will be based at the Company's Head Office at Templeborough and report to Chief Executive John Pennington, with functional responsibility to Finance Director Norman Broadhurst.

Mr. Swynnerton was educated at Charterhouse School and at Sheffield University, where he obtained an Honours Degree in Accountancy and Financial Administration in 1967. On qualifying as an accountant, he was employed by Coopers and Lybrand in both London and Sheffield before being appointed Finance Director of Edgar Allen Tools in 1974.

Following the merger of Edgar Allen and Balfour Darwins nine months later, he was appointed Group Chief Accountant. In 1979, the Edgar Allen Balfour group was taken over by Aurora plc and he then became the Divisional Finance Controller of the Steel Division.

Eight months later, Mr. Swynnerton was appointed Group Financial Controller of Aurora plc, and remained there until his move to U.E.S.

A Fellow of the Institute of Chartered Accountants, he is married and has a son.

During his leisure hours, Mr. Swynnerton enjoys playing squash, gardening and 'playing around with computers'.

FAMILY NOTES

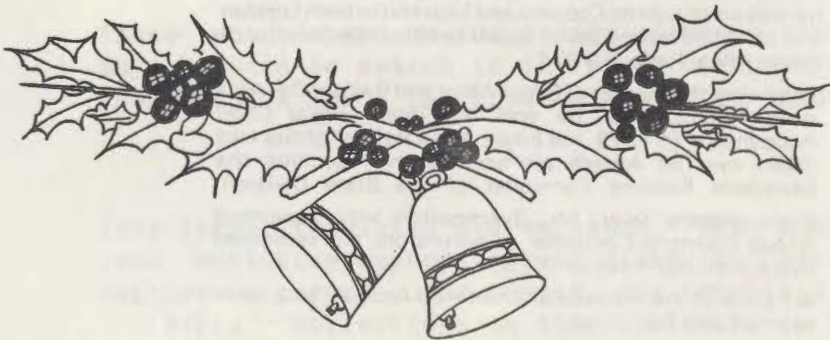
Congratulations to our member DAVID SWINNERTON who has successfully completed his course at Cranwell and is now Flying Officer D.Swinnerton RAF. He will be staying on there until July 1990 to complete his specialist training and his address will be [REDACTED]

I was delighted to receive the results of a lot of research done by our President which shows that he is making a good recovery and in his own words "I am 99% fit and rounding up my agricultural activities - on 7th December we have the AGM of the Tropical Agriculture Association (1000 members) - includes a memorial lecture and buffet after which I retire."

A FLYER

There was recent mention in the Daily Telegraph of a Sub.Lt.N.J.SWINNERTON RN. having completed his fast jet training. Does anyone know who this is?

Finally, may I wish you all a very happy and peaceful Christmas and New Year.



IMPORTANT

The Society does not have a consolidated reference file to all its members and now we have so many members it is not always easy for me to instantly recognise just where each member fits into the family.

It would be a tremendous help to me therefore if every member would fill in the form enclosed and return it to me (ISS) at the address on the inside front cover. Do not worry if you cannot do it all, just do as much as you can and we will add to it as we learn more about the family.

It really would be of enormous assistance and I would be most grateful for your help.